



St Luke United Methodist Church
 Pastor Audrey Young
 501 E 19th Street N
 Newton, IA 50208

Sunday Worship at 8:00 and 10:30 am
 Each followed by Fellowship & Snacks



Sunday School for all, including Adults at 9:15

Non-Profit Organization
 U.S. Postage
PAID
 Permit 419
 Newton, IA 50208

ADDRESS SERVICE
 REQUESTED

St Luke UMC

501 E 19th Street N
 Newton, IA 50208
 641-792-5736

August 2016



THE Flame
 CATCH THE FIRE!

«Mailing Name»

«Address»

«City», «State» «F9»



**God's Country Mini-Camp
 For 5th-9th Graders
 Friday-Sunday, August 5-7**

Pleasant View UMChurch
 8454 S 28th Ave E

This camp is \$60 includes free t-shirt and Sunday meal for campers and their families. Contact 641-417-9463 or visit "God's Country Mini-Camp" on Facebook to register.

St Luke UMC offered the Ice Cream Social in order to offer **Camperships to help pay** for St Luke kids of all ages to go to church camp. Contact Pat Patty, UMW Treasurer for information.



Farm animals, Zip line, Barn Yard Olympics, Country meals, Camp fires, Country crafts, Hay rides, Singing and worship, Obstacle Course led by Pastor Tim Morgan and the UMChurches of Kellogg and Pleasant View.



**Sermon Series continues on
 Old Testament Prophets**

Sunday, August 7: 8 & 10:30 am
 Worship with Communion.
 PROPHET ISAIAH 1:1-20



Sunday, August 14: 8 & 10:30 Worship
 PROPHET ISAIAH 5: 1-7
 2nd Sunday Apportionments Offering

Sunday, August 21: 8 & 10:30 am Worship.
 PROPHET JEREMIAH 1: 4-10

Shall we have **Blessing of the BackPacks and School Kit Bags?** Bring your school bags with you to worship.



Date to be Announced for Annual Coffee N.O.W.

with Dale Dorrell singing and strumming to original songs as well as offering a "Hymn Contest." If Dale doesn't know the hymn you name, he puts money in the Mission Offering Jar. If he knows it and can sing it, you put money in the Jar. It's all for fun, fellowship, and missions. Brownies and Beverages will be served.



Sunday, August 28: 8 & 10:30 am Worship
 PROPHET JEREMIAH 2:4-13



**Iowa UMC's Own Rural
 Life Sunday with Offering**



St Luke Amazing Financial Update

We say *Amazing*, because St Luke giving to Special Offerings & Missions is always very generous. The Finance Team thanks you and wants to give you monthly updates. Apportionments, District Asking and Special Offerings are posted on the church office window.

By July 13, 2016, we have submitted \$10,410 of our \$25,686 annual apportionments (*a portion meant for others*) and an additional \$20 to District Askings. That catches us up through April.

Our July 3 offering was \$3,644;

July 10 was \$4,812

July 17 was \$3,357, which included \$492 for VBS.

July 24 was \$951

Some folk have picked up the *apportionments-missions* cause, hoping to avoid an end-of-year push. **You may want to join in designating and/or just giving a little or a lot more to the General Fund.**

We are continuing our 2nd Sunday Offering & adding 2nd-5th Sunday School Offerings for the Church World Service part of Apportionments. Anytime you choose, you can write *Apportionments* in the memo of a check to *St Luke*.



VBS 2016



Bible Storytelling, Olympic snacks, Song & Dance, Game time in the outdoor arena, Rosie Road-runner and Dirty Darla in the Super Summer Marathon, where Rosie gives her heart to Jesus and even forgives Dirty for tripping her in the race! We learned a lot about being on God's Team from Joshua too. 58 Athletes, 32 volunteers, \$279 to Missions plus \$492 received on Sunday = \$771 for Special Olympics and Kids Assist, Inc.



**I'm on
 God's Team**



Run with perseverance the race marked out for us, Hebrews 12:1



Dear St Luke Family,

We already have two new District leaders who began on July 1, 2016. Our DS is **Rev Dr Heecheon Jeon** who comes to us from the UMC, Mt Vernon, IA (2015), served FUMC, Iowa City as associate (2012-2015) and Corning UMC (2007-2012). He is an ordained Elder and Full Member of the Iowa Conf. Rev. Jeon was born and grew up in South Korea, a graduate of Hoshin University (B.A.), San Francisco Theological Seminary (M.Div), Graduate Theological Union at Berkeley (MA), and Claremont Graduate University (PhD in Philosophy of Religion & Theology). He authored a book titled *Subjectivity of Difference: A Poiesis of Deconstruction of Subjectum, Deus and Communitas* in 2011. He and his wife Ann have a daughter Sonia. Heecheon loves tennis, reading, and music.



We have a new Field Outreach Minister in **Naomi Sea Young Wittstruck** who attended Hamline University, then Cornell College, Mt Vernon, IA (BSS,) received her MDiv with focus on Church and Community Ministries, at Candler School of Theology at Emory, Atlanta, GA. She served Collegiate UMC and Wesley Foundation, Ames, as Campus Ministry Associate, and the Iowa Conf as the Leadership Development Minister for Social Justice and Mission.

Naomi has had extensive experience developing partnerships, facilitating learning opportunities, and leading visioning activities to build meaningful community ministries. Naomi has a deep passion for the ministries and work of the UMC and the Iowa Conf and holds the belief that we, as God's people, have a unique opportunity to impact positive change in our communities and in the world.

Bishop Haller was senior pastor of FUMC, Birmingham, Detroit Conf, Michigan; served six years as DS of the Grand Rapids District, West Michigan Conf. She led a campaign to raise \$500,000 + a \$500,000 matching gift to build the 24-bed Ubuntu Retreat Center at Africa U, Zimbabwe. She pastored in Grand Rapids for 13 years, Hart, Ludington, and Traverse City.

Bishop Haller received a Bachelor of Music in organ at Wittenberg, Ohio, & studied sacred music in W Berlin, Germany; a Master of Music degree in organ from the Institute of Sacred Music and a MDiv both from Yale Divinity School.

Bishop Haller is a prolific writer whose essays and articles have appeared in the *Michigan Christian Advocate*, *Worship Arts*, *United Methodist Reporter*, *Ministry*

Matters, *UM Insight*, *the United Methodist News Service Daily Digest*, *MICconnect*, and *Faith in Action*.

Bishop Haller arrives in September. Access her blog social media, [St Luke United Methodist Church](#) on fb and at [www.iaumc.org](#). She is the first woman to serve as an Iowa Bishop.

I am humbled and honored to give up "my" space in our newsletter to our new leaders. We will meet **Rev Dr Heecheon Jeon and Naomi Sea Young Wittstruck at St Luke** for our **Annual Church Conference Monday, October 24 at 6:30 pm**, if not sooner.

Bishop Julius C. Trimble, Iowa's UM Bishop since 2008, will become Bishop of the Indiana UMC in September.

I invite us all to pray for our UM leaders and churches, especially in these challenging times.

I will always pray for you and ask *Pastor Audrey* for your prayers for me.

Apportionments are Missions

Apportionments = A Portion Meant for Others.

The main way we support the ministries of the church is through our apportioned funds, a method of giving that proportionally allocates the church-wide budget to conferences and local churches. **The World Service Fund** is the essential core of our global outreach ministry, underwriting Christian mission around the world. By giving to World Service we empower United Methodist evangelistic efforts...stimulate Bible study and spiritual commitment...encourage church growth and discipleship...and help God's children everywhere. See more online at: [www.umc.org/how-we-serve/apportioned-funds](#).

SPRC = Staff-Parish Relations Committee

Members of our SPRC want to have their names included in the newsletter for continued good "relations." They are Lori Leix, Katie Jones, Stephen Pageler, Amy Murphy, and Scott Greene.

Iowa Justice For Our Neighbors

A new project began July 1 at Justice For Our Neighbors. On May 6, 2016, the Crime Victim Assistance Board of the Department of Justice awarded a grant to Iowa Justice For Our Neighbors for three years through the Victims Services Support Program. The purpose of the grant is to provide immigration services to victims of crime. This will help us to fund on-going projects like our sexual assault and domestic violence work.

It will also expand our ability to help victims of human trafficking, both labor and sexual trafficking. These are some specific examples of crimes, but there will be other types for which we can help immigrant victims.

Several new staff will be added with these funds. Thanks to Doug Bates, Brynne Howard, Amy Morris for hours of hard work writing this grant. We look forward to continuing to provide more justice for neighbors!

WORSHIP ASSISTANTS

August 7	8 AM	10:30 AM
Ushers	Larry/Darlyne Howard	Dennis/Pam Smith Baylee Munson
Greeters	Myron/Betty Rhone	Swarts Family
Readers	Pam Andrews	Katie Jones
Acolytes	Ron Lisk	Kael/Ella Swarts
Nursery	Parents take turns	Sharon Swarts
Keyboard	Bev Thomas	Jan Lewis
Special		
Projection	Peg Ehler	Carolyn Cook
Fellowship	Peg Ehler	Bruce/Leslie Maach
Care Core	Tamara Lloyd	Kari Ann Munson
Communion	Lisa Pageler	Counters: Jan Lewis/Russ Leix
August 14	8 AM	10:30 AM
Ushers	Bill/Linda Hotger	Deb/Austin Stoullil
Greeters	Rosemary Hartschen	Karen Clark/ Rhondi Machin
Reader	Bruce Maach	Corinne Kleppe
Acolytes	Ron Lisk	Kleo Walker-O'Brien
Nursery	Parents take turns	Savannah Reicks
Keyboard	Bev Thomas	Jan Lewis
Special		
Projection	Brad Patty	Pam Smith
Fellowship	Betty Skaggs	Karen Clark
Care Core	Pam Arrowood	Lisa Marston
Counters		Pat Patty/Deb Stoullil
August 21	8 AM	10:30 AM
Ushers	Dick/Pam Stiles	Jeff/Amy Murphy
Greeters	Ann/Ben/Caleb Leonard	Carolyn Cook
Readers	Rosemary Hartschen	Darin Swarts
Acolytes	Ron Lisk	Evan/Emma Grimm
Nursery	Parents take turns	Pat Patty
Keyboard	Bev Thomas	Jan Lewis
Special		
Projection	Brad Patty	Karen Clark
Fellowship	Jean Schnell	Sue Crook
Care Core	Joyce Stonehocker	Karen Clark
Counters		Russ Leix/Brad Patty
August 28	8 AM	10:30 AM
Ushers	Barb Kaldenberg/ Tamara Lloyd	Roy/Pat Patty
Greeters	Jean Schnell	Marianne Spaur
Readers	Jenni Patty	Rose Evans
Acolytes	Ron Lisk	Jacob Murphy
Nursery	Parents take turns	Kali Draper
Keyboard	Bev Thomas	Jan Lewis
Special		
Projection	Peg Ehler	Carolyn Cook
Fellowship	Margaret Gullett	Marianne Spaur
Care Core	Barb Kaldenberg	Marianne Spaur
Counters		Rose Evans/ Barb Kaldenberg

Where to Find Us

Pastor: Audrey Young
pastorayoung@gmail.com
 Office: 641-792-5736 Cell: 641-840-0119
Adm. Assistant: Shirley Guillaume
 Church Office Hours: Tues-Thurs, 8-Noon
stluke@windstream.net Phone: 641-792-5736
Newsletter Editor: Corinne Kleppe
ckleppe@gmrc.com, Phone: 641-831-2639
Article Submission by the 13th of month.
Website: <http://www.stlukenewton.com>
Website Manager: Shirley Guillaume
Facebook: [St Luke United Methodist Church Newton](#)

St Luke News

Our sympathies to Peg, Bill and Tina Ehler and family on the loss of her father, John Dane. And Diane and Jack Chadwick on the loss of her sister. And Ella Hendershot on the loss of her sister.

St Luke Produce Table

Bring produce, and/or take produce in exchange for a free-will donation in the Red Bucket for St Andrew Produce Project.

UMWomen Helping Hand Offering

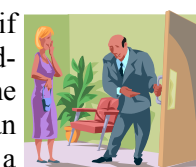
is collecting children's socks and underwear during August and September for local school children. There is a basket in the entry for donations.



Please--Help Update All Addresses including college students. We are constantly updating addresses of our members & friends. Help us by supplying us with those you know. Thank you.

Worship Assistants

Please find a sub or trade if you cannot do it as scheduled. Then contact the church office so we can print correct names. It's a way for us to get to know one another.



Sunday	Monday	Tuesday	Wednesday	Thursday	Friday	Saturday
	1	2 *Kyler Swarts 6:30 pm Trustees Mtg	3	4 *Katie Jones	5 *Alayna Arthur God's Country Mini-Camp thru 7th at Pleasant View UMC for 5th-9th grade. 641-417-9463	6 *Drake Rhone
7 8/10:30 Worship – Communion 9/11:30 Fellowship 9:15 Sunday School	8	9 *Linda Powell	10 *Kyle Swihart 7 pm Page Turners Book Club in Entry	11 *Rose Evans	12	13
14 8/10:30 Worship – 2nd Sunday Apportionment Offering 9/11:30 Fellowship 9:15 Sunday School *Rachel Pageler *Matthew Thongvanh	15	16 7 pm Council Mtg	17 *Betty Rhone *Becky Miller *Larry Stoullil 5:45 pm UMWomen meet at St Luke to carpool to Pat Patty's for Potluck Salad	18 *Aaden Grimm	19 *Jason Fifer	20
21 8/10:30 Worship 9/11:30 Fellowship 9:15 Sunday School 6 pm ICIW Worship at Mitchellville	22	23 Newton  6:30 pm SPRC mtg	24 8:30 am Collate Newsletter *Kris McKibben *Diane Chadwick	25	26 *Amy Wright	27 *Barb Kaldenberg *Duane Schwartz
28 8/10:30 Worship - Rural Life Offering 9/11:30 Fellowship 9:15 Sunday School 6 pm Sandwich Boomers Picnic at Agnes Patterson Shelterhouse	29	30 *Pam Andrews *Charles Walker 7 pm Mission Coalition mtg	31 New Neighbors moved in? Invite them to St Luke while you are wel- coming them	August 2nd-5th Sunday School Offering is for Church World Service	 *Denotes Birthdays! If your birthday is missing or incorrect, contact the office	

Read Calendar closely for events not appearing elsewhere in Newsletter. Thank you.



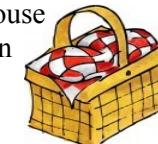
**United Methodist Women
Wednesday, August 17
5:45 pm Meet at St Luke to
Carpool to Pat Patty's
House for Potluck
Salad Supper**

"For I know the plans I have for you," says the Lord. "They are plans for good and not for disaster, to give you a future and hope."
Jeremiah 29:11

Program: "Our Camp Scholarship Recipients' Report" - Jenni Patty, Coordinator
Hostess: Pat Patty
Kitchen Cleaners: Betty Rhone & Martha Stewart
Bring *Helping Hand Offering*:
August & September-Bring socks and underwear for local school children through Salvation Army
September 24 - District Annual UMW Meeting at Altoona UMC

Sandwich Boomers Picnic
(actually, all St Lukers are invited)

When: Sunday, August 28th at 6 PM
Where: Agnes Patterson Shelter House
Bring a dish to share, your own table service & your meat to grill.
Drinks and grills will be provided.

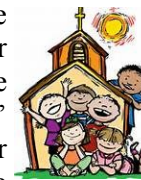


**Sunday Morning
Special Music or Drama**

Share your God-Given Talent with St Luke during Worship Times. Specials can be Musical, Drama, Dance or a Reading.
Sign-up at the Servants' Counter.

One-Room Sunday School

The One-Room Sunday School for children 3-years of age through 3rd grade has begun. To give our school year teachers a break, volunteers are asked to sign-up on the Servants' Counter to teach for a Sunday or two during the summer. If you have questions about the program, please talk to Tamara Lloyd. Be a part of this vital ministry at St Luke!



**August Salvation Army
Food Pantry
Request**
Rice and Pastas



News from our Librarian ~ Karen Clark

Here's a book you won't want to miss, *I Am Second*. It is a compilation of the real stories of changed lives written by Doug Bender and Dave Sterrett. These are the stories of real people with challenges, hard challenges. These people all found change, joy, and peace through a relationship with God which makes him first in their lives.



The stories include a rock star, a major league baseball player, a *Biggest Loser* TV reality finalist, a pastor and many more. These people have hit bottom, but none of them stayed there. You will find honesty in these shocking struggles and at the very bottom each of them learned it was God he or she could lean on and trust rather than money, power, drugs, food or any of the other things previously thought necessary for survival. Real stories, real people, don't miss it. You know where you can find it, in our little library in the corner!

**January & March 2017
Work Trips to MMDC**

Several St Luke groups have gone to Midwest Mission Distribution Center (MMDC) in the past few years where there are opportunities for people of all skill levels, from sorting and counting, to sewing, woodworking, sewing machine repair and more. If you are willing, they will find a job for you! You will be impressed when you see the scope of the work done there and hear about the world wide network they have developed.



St Luke has two more opportunities to experience this ministry and participate in some hands on mission work. We will be staying on-site in the dorm and preparing some of our own food on **January 22-25, 2017** and **March 5-8, 2017**. We will travel Sunday afternoon, work 2-1/2 days and travel home Wednesday afternoon of both trips. Contact Karen Clark with questions, comments or to reserve a place on either or both of these trips.

Sunday, August 28: Rural Life Sunday

Rural Life Sunday celebrates & supports rural life, the heritage of the United Methodist Church and its ministries. 100% of this special offering is retained by the Iowa Conference to fund grants to local Iowa UM Churches, rural networks & community organizations.



Sunday School Mission Offering

Our Sunday school offerings through August on the 2nd through 5th Sundays will go toward Church World Service (First Sunday offering continues for Sunday School administrative costs.)

The main goals of Church World Service are **Fighting hunger and poverty. Promoting peace and justice.**

CWS has worked for seven decades with one goal: building a world where there is enough for all by affirming the power of individuals and communities to take ownership of their future. We meet them right where they are, helping them create solutions they can maintain – and build on.





My Story

My cousin Lisa likes playing tennis. Me...not so much. When we shared an apartment in our 20's, she would sometimes talk me into playing tennis with her. If there were 3 courts all in a row and we were playing in the far left court, I would often hit the ball into the far right court.

Then one July we were watching Wimbledon on tv and Lisa talked me into playing tennis. I played like a different person. I kept the ball in our court and was able to do some returns and volleys with her. Apparently, by watching the pros play, I was better able to imitate their moves, to some extent. I still wasn't good at tennis... but I was better.

When we read the New Testament letters from Paul, we see that he is often encouraging others to follow his lead. He modeled behaviors that helped others to imitate his actions on their path to a true relationship with Jesus. We can do the same thing in our lives. Model your faith for others to see...encourage them to go and do likewise.

Philippians 4:4, 8-9 "Rejoice in the Lord always. I will say it again: Rejoice!"

Finally, brothers and sisters, whatever is true, whatever is noble, whatever is right, whatever is pure, whatever is lovely, whatever is admirable – if anything excellent or praiseworthy – think about such things. Whatever you have learned or received or heard from me, or seen in me – put it into practice. And the God of peace will be with you."

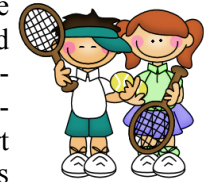
Corinne Kleppe - Editor

Adult-2 Class Takes A Sabbatical

The Adult-2 has finished *The Case for Christ* and chosen to not meet in August or Labor Day Sunday.

Beginning September 11 they will start reading and discussing *Postville: A Clash of Cultures in Heartland America* by Stephen G. Bloom. This is the story of the Hasidic Jews and their move into Postville, Iowa in 1987.

There is always room for more to join the discussion in the 3rd room on the left in Ed Unit at 9:15 on Sunday mornings.



St. Luke BIBLE STUDY
 Seasons OF THE Spirit
 Sunday School Class
 meets 9:15 a.m. in the choir room

In your place!

What place?

LUKE 14:1, 7-14

The problem with humility.

In the gospel of Luke, Jesus often is pictured at a meal, dining with "outsiders." In chapter 14:7-14, Jesus is sharing a **Sabbath** meal with Pharisees and He was under close surveillance by them. Pharisees were members of an ancient Jewish sect, distinguished by strict observance of the traditional and written law. In biblical society meal etiquette was very important.

Meals in Jesus' time could be predictable events, during which **roles** and **status** were emphasized. One's social status in a community would be mirrored in seating placement at a meal. If one (Jesus) critiqued the society's meal practices, one was, likewise, critiquing society as-a-whole. Jesus' vision of an **inclusive** meal fellowship mirrored the inclusiveness of God's love and coming *reign*.

In verses 7-14 Jesus advises **humility** as a part of hospitality. Instead of guests jockeying for the *best* place to sit, they were advised to "go and sit in the back of the room." Hosts were advised to invite people who could "never repay you. Your reward will come from God at the resurrection of the just and good."

What is your fondest memory of being welcomed by warm hospitality? What happened to make you feel welcomed?

The Seasons of the Spirit Bible Study Class meets Sunday mornings at 9:15 to read about and discuss issues related to each week's prescribed lectionary readings. Come, join in the learning!

∞ Lectionary Readings for August 2016 ∞

- **August 7: Hebrews 11:1-3, 8-16** | Faith: Into the Unknown
To grow in trusting God's promises as we explore individual and corporate faith.
- **August 14: Hebrews 11:29-12:2** | Faith: Against the Odds
To celebrate and consider our place among the cloud of faithful witnesses.
- **August 21: Luke 13:10-17** | Breaking the Rules
To explore what it means to participate fully in the story of God's liberating love.
- **August 28: Luke 14:1, 7-14** | In Your Place! What Place?
To imagine a world where all can participate in God's inclusive and compassionate reign.



New Addresses

Darin & Sharon Swarts Family - 409 E 17th St N, Newton, IA 50208
 Evelyn Davis - 114 N 5th Ave W, Rm 24, Newton, IA 50208
 Erin Stonner - 309 W 6th St, Storm Lake, IA 50588
 Kelly Murphy - ????
 Any others?



HeartReach Mobile Lab at St Luke

Location: St. Luke United Methodist Church
 Thurs, August 4th
 7:10am-1:30pm

The *HeartReach Mobile Lab* from Unity Point-Des Moines is a 37' Winnebago that brings dedicated technicians and nurses to you to provide the most comprehensive screening for heart disease and stroke. A variety of screening tests are available to help identify your risk for heart disease and stroke....Easy and affordable.

♥ To schedule an appointment... CALL: 1-866-935-5432
 ♥ For more information online: VISIT:

www.unitypoint.org/heartreach

Screening options available:

Option 1: Complete Screening \$95

- ♥ Ultrasound of Carotid Arteries (blood flow to the brain)
- ♥ Abdominal Aortic Aneurysm (blood vessel in belly)
- ♥ Ankle-Brachial Index measure (blood flow in arms/legs)
- ♥ Electrocardiogram or EKG (checks the heartbeat)
- ♥ Cholesterol Profile with Blood Sugar
- ♥ Weight and Waist Measurement
- ♥ Heart Disease Risk Survey
- ♥ Consultation with a cardiac nurse.
- ♥ If you have cholesterol and blood sugar results from the past 6 months, bring them with you and we will use them for your heart disease risk score.

Option 2: Vascular and EKG Screening \$85

- ♥ Ultrasound of Carotid Arteries (blood flow to the brain)
- ♥ Check for Abdominal Aortic Aneurysm (blood vessel in belly)
- ♥ Ankle-brachial Index Measure (blood flow in arms/legs)
- ♥ EKG (checks the heartbeat)

Option 3: Vascular Screening \$75

- ♥ Ultrasound of Carotid Arteries (blood flow to the brain)
- ♥ Check for Abdominal Aortic Aneurysm (blood vessel in belly)
- ♥ Ankle-Brachial Index Measure (blood flow in arms/legs).

Option 4: EKG & Cholesterol Profile & Blood Sugar \$65

- ♥ EKG (checks the heartbeat)
- ♥ Heart Disease Risk Survey
- ♥ Cholesterol Profile with Blood Sugar
- ♥ Weight and Waist Measurement
- ♥ Consultation with a cardiac nurse.

Option 5: Cholesterol Profile with Blood Sugar \$35

Option 6: EKG (checks the heartbeat) \$35

Option 7: Carotid Artery Screening (blood flow to brain) \$35

Option 8: Abdominal Aortic Screening (blood vessel in belly) \$35

Option 9: Ankle-Brachial Index Measure (blood flow in arms/legs) \$35

Open to the public. St Luke provides the place to park the Winnebago.

Christian Radio

88.3 in Newton area, 90.5, 103.7 & 95.3 Des Moines
 98.1 for M'town or online at www.klove.com. Also
 101.9 W'loo and 107.1 DSM, Northwestern Radio.

August is Ingathering School Kits Time



It's that time again. Time to collect supplies for school kits. Time to make bags for school kits.

We invite you to purchase supplies and bring them into the church. You don't even have to put them in a bag, we'll do that for you. There is a table near Pastor's office in the Entry with a box for supplies.

Once we have some supplies on hand, the counting and assembling will begin. If we have partial kits, a note will be added with what is needed to complete this kit.

The Ingathering book notes: "School kits provide tools for education, which changes lives. In countries where children don't have books, school supplies or classrooms, a school kit may be their only educational resource."

A school kit includes:

- 3 spiral notebooks (8 1/2 x 11 wide rule) Total of 210-250 sheets of paper
- 1 -30 cm metric ruler
- 1 - box of 24 crayons (Only 24)
- 1 - 2 1/2 inch eraser
- 1 – blunt end scissors (metal blades)
- 1 hand pencil sharpener (no 1-inch)
- 6 – unsharpened pencils with erasers

Only NEW items please.

School bags can be made of STURDY Cloth – 14 inch wide x 16 inch long (finished size) with 1 inch x 19 inch finished size handles. (It is very important that the items match the above descriptions. Also, no slogans or flags.)

If you are interested in making school bags, instructions can be found on the table by Pastor Audrey's office or online at: www.midwestmissiondc.org.



THANKS to Our VBS Volunteers!

Amy Murphy, Director	Tamara Lloyd
Peg Ehler	Pat Patty
Michelle Walker-O'Brien	Kari Ann Munson
Kleo Walker-O'Brien	Rosemary Hartschen
Sara Cook	Brittany Eckert
Drake Rhone	Terri McKinney
Whitney Breckenridge	Lisa Marston
Leah Osborn	Hannah Marston
Tate Osborn	Danni Lewis
Jeff Murphy	Leslie Maach
Ann Leonard	Karen Clark
Shari Maach	Jenni Patty
Bruce Maach	Barb Kaldenberg
Sharon Burton	Roy Patty
Lisa Pageler	Karen Dorrell
Ester Fifer	Pastor Audrey Young
Betty Rhone	Did we miss anyone?