

St Luke UMC

501 E 19th Street N
Newton, IA 50208
641-792-5736

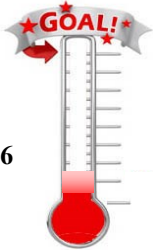
February 1, 2022



THE BI-WEEKLY Flame CATCH THE FIRE!

2022 Apportionments

\$14,313



\$166

Financial Update



Thank you to everyone for your continued support of St Luke ministries. These offerings were received in the month of January:

- Total of \$11,450 which included:
- \$ 1075 - Building Fund
- \$ 166 - Apportionments
- \$ 44 - Human Relations Day
- \$ 8 - Christ's Foundry UMC



Where to Find Us

Pastor: Rev. Chad Jennings
chad.jennings@stlukenewton.com
Office: 641-792-5736 Cell: 319-929-1867

Adm. Assistant: Jennifer Etter
Church Office Hours:
Mon-Thurs 9 am - 12 pm
worship@stlukenewton.com
Phone: 641-792-5736

Newsletter Editor: Corinne Kleppe
corinne.kleppe@grinnellmutual.com
Phone: 641-831-2639

Article Submission by the 13th of month.
Website: www.stlukenewton.com
Website Manager: Stephen Pageler
YouTube: St Luke United Methodist Church
Facebook: St Luke Newton
Prayer: prayer@stlukenewton.com

January MMDC Trip

St Luke had a team of 12 volunteers that worked at Midwest Mission Distribution Center during the last week in January. Pastor Chad Jennings, Barb & Mike Kaldenberg, Corinne Kleppe, Rose Evans, Dave Miller and Karen Clark from St Luke were joined by Ina Heidemann, Mike & Ginny Dalton, Pastor Jon Bailey and Jonnelle Farver. This wonderful group of volunteers were kept very busy working on a variety of jobs. A few of those job included working on school desks and packing Personal Dignity Kits with a washcloth, towel, soap, toothbrush, razor shampoo and deodorant. They also brought with them 1,608 diapers, 16 baby sweaters, 1 bike, 7 sewing machines, the school and personal dignity kits from this fall and 2 covered in love quilts. All of these supplies are available for distribution throughout the world as needed. The center partners with a number of agencies for distribution in a network that is nothing short of miraculous.



Lenten Study

We will be having a Monday night Lenten Study via zoom starting March 7 at 6:30 pm. We will be reading the book "The Difficult Words of Jesus" by Amy-Jill Levine. Books are \$13. Sign up at the servant's counter if interested.

Monday Night
LENTEN Study
March 7 - April 11
Books are \$13
Sign up TODAY!



My Story

It was Saturday and we had traveled to West Union for our weekly trip to the grocery store, and usually, a visit with grandparents. The fun thing about Saturday afternoon at Bostrom's Grocery Store was the weekly prize drawing. The store manager would find a child in the store with his/her parent and ask them to draw a name out of the jar. The payment for your services as a name picker? Cracker Jacks!

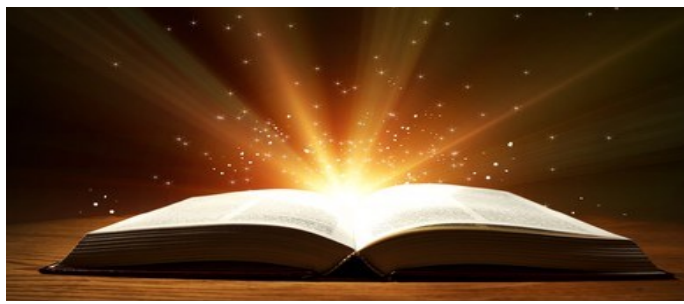
Cracker Jacks came with 3 small boxes taped together. If one of us was chosen to draw a name from the jar... Kamela, Loyce and I each ended up with a box of Cracker Jacks. Win! Win! Win! And inside every box of Cracker Jacks, you would find your very own silly prize. The popcorn and peanuts were also very delicious. Yum! Win again!



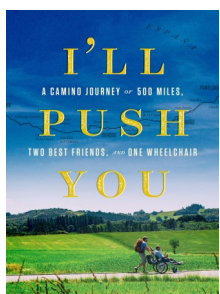
Wouldn't it be great if we could look at the Bible with that same childlike enthusiasm? Instead of 3 boxes of Cracker Jacks and a silly surprise, we find 66 books bound together. 66 books full of surprises, heroes, heroines, songs of praise, tales of warning and stories of Victories. The prizes found within the pages of the Bible are beyond our complete comprehension. I would say that is the biggest WIN of them all.

Crack open the Bible today and find your prizes!!!

Corinne Kleppe



Adult-2 Sunday School Class



The Adult 2 class is reading and discussing the book *I'll Push You* by Patrick Gray. *I'll Push You* is the story of two best friends who decide to do the Camino de Santiago across Spain. It is the true story of Justin and Patrick. Justin has been diagnosed with a neuromuscular disease that robbed him of the use of his arms and legs, thus Patrick will need to push the wheelchair on their journey. He not only pushes the wheelchair, but also has to feed and care for Justin. "A travel adventure full of love, humor, and spirited truth."

If you are looking for a class with variety and topical studies, this would be a good class for you. We read the book together, so there is no "homework". There is always room for more to join the conversation. We meet in Room 5 in the education wing right after Worship.



Bible Study
Sunday
School
Class
Meets in the
choir room

Called into Mission

LUKE 5:1-11

*Weighing our response
to Jesus' call to follow
in God's ways*

The Sea of Galilee is also known as the *Sea of Tiberias and Lake Gennesaret*. In this reading it is referred to as Lake Gennesaret. On its banks we find Jesus in the midst of a huge crowd. Nearby fishermen washed their nets, leaving their boats on shore. Jesus got into the boat of Simon and asked him to push off, anchoring a short distance from the beach.

Jesus later asked Simon to move his boat into deeper water. Simon replied that after much (previous) fishing, "We haven't caught even a minnow. But ... all right, I'll do it if You say so."

To the surprise of all participating fishermen, when the nets were pulled up, they were so full of fish, the boats almost sank! James and John, Simon's partners, along with all the other fishermen present were flabbergasted with the amount of fish brought forth in their nets. Simon then approached Jesus and knelt before Him.

Lord, I am a sinful man; you should not be around the "likes" of me.

[Do you recall the song "I Will Make you Fishers of Men"? This is the Bible story from which that story is inspired.]

Jesus then told Simon "Do not be afraid, Simon. From now on, I will ask you to bring Me **people**, instead of **fish**."



The Seasons of the Spirit Bible Study Class meets Sunday mornings, after the 9:30 church service. To honor and respect all present we are immunized and wear face masks. The class's emphasis is on the weekly lectionary readings.

∞ **Lectionary Readings for February 2022** ∞

• **February 6:** Luke 5:1-11 | Called into Mission
To weigh our response to Jesus' call to follow in God's ways

• **February 13:** Luke 6:17-26 | Blessings and Woes
To explore what it means to be blessed and to be a blessing

• **February 20:** Luke 6:27-38 | Living as Disciples
To explore Jesus' call to love our enemies and work for peace

• **February 27:** Luke 9:28-36 (37-43) | Holy Mystery
*To celebrate the many ways
God's presence is revealed in our lives*



WORSHIP ASSISTANTS	
Feb. 6	9:30 AM
Ushers (2)	
Greeters (2)	
Reader	Emily McConkey
Acolyte	
Keyboard	Bev Thomas
Projection	Peg Ehler
Care Core	Barb Swihart, Amy Murphy
Coffee Time	Wendy Jennings
Counters (2)	

Feb. 13	9:30 AM
Ushers (2)	
Greeters (2)	
Reader	
Acolyte	
Keyboard	Bev Thomas
Projection	
Care Core	Jenni Patty, Lisa Marston
Coffee Time	Lisa Marston
Counters (2)	

Feb. 20	9:30 AM
Ushers (2)	Corinne Kleppe
Greeters (2)	
Reader	
Acolyte	
Keyboard	Jan Lewis
Projection	
Care Core	Joyce Stonehocker, Karen Clark
Coffee Time	
Counters (2)	

Feb. 27	9:30 AM
Ushers (2)	
Greeters (2)	
Reader	
Acolyte	
Keyboard	Jan Lewis
Projection	
Care Core	Barb Kaldenberg
Coffee Time	
Counters (2)	

February Worship Assistants

We are looking for volunteers to be worship assistants for the month of February. If you would like to volunteer you can email the church office at: worship@stlukenewton.com, use the sign-up sheets on the coffee counter or you can add your name to our new online sign-up sheet. Here is the link to sign up online:



<https://docs.google.com/document/d/1LV73f571kMBVLyocfiFvS7GsvYM03YPBSzoXUhXQL7s/edit?usp=sharing>

We still have quite a few openings so please sign up if you are able. If we continue to have a lot of unfilled positions we may have to return to assigning worship assistants. We appreciate all those who have so willingly volunteered to help. Thank you!

Puzzle!

Answer each statement (based on Matthew's gospel) True or False by circling the letter in the correct column. Then write each circled letter on the appropriately numbered line below to discover why Jesus died.

- | | TRUE | FALSE |
|--|------|----------|
| 1. Jesus healed Peter's wife
<i>(Matthew 8:14).</i> | E | N |
| 2. Jesus fed the 5,000 with two loaves and five fish <i>(14:17).</i> | R | A |
| 3. At Jesus' Transfiguration, Peter saw Jonah and Elijah <i>(17:3).</i> | M | S |
| 4. The rich, young ruler decided not to follow Jesus <i>(19:22).</i> | T | C |
| 5. Jesus said the temple had become a "den of robbers" <i>(21:13).</i> | I | G |
| 6. Famines and earthquakes are signs of the end of the age <i>(24:7).</i> | V | D |
| 7. Jesus tells a story of the six wise and six foolish maidens <i>(25:1-13).</i> | F | A |
| 8. Judas betrayed Jesus with a secret handshake <i>(26:48).</i> | P | L |
| 9. The Roman governor Polonius interrogated Jesus <i>(27:11-14).</i> | W | O |
| | | N |
| | 3 | 2 |
| | 8 | 6 |
| | 7 | 4 |
| | 5 | 9 |
| | 1 | |

Answer: N, A, S, T, I, V, A, L, O; salvation

Worship Assistants

Please find a sub or trade if you cannot do it as scheduled. Then contact the church office so we can print correct names.



Sunday	Monday	Tuesday	Wednesday	Thursday	Friday	Saturday
		1 Discover Hope Supper 5:30 pm	2 7:15 pm Choir Practice	3	4	5 9 am-12 pm P.E.O. Meeting FH Rsrvd
6 9:30 am Worship - Communion Sunday School to Follow 	7 6:30 pm Zoom Study Group	8	9 7:15 pm Choir Practice	10	11	12 9am-4pm Quilt Guild FH Rsrvd
13 9:30 am Worship Sunday School to Follow Disability Awareness Offering 	14  6:30 pm Zoom Study Group	15	16 1:15 pm UMW Meeting at St Luke 7:15 pm Choir Practice	17 6:30 pm Quilt Guild FH Rsrvd	18	19
20 9:30 am Worship Sunday School to Follow	21  6:30 pm Zoom Study Group	22 7 pm Mission Coalition	23 7:15 pm Choir Practice	24	25	26
27 9:30 am Worship Sunday School to Follow	28 6:30 pm Zoom Study Group					

Read Calendar closely for events not appearing elsewhere in Newsletter. Thank you.



United Methodist Women

February 16 - 1:15 pm
At St Luke UMC

If weather is below zero, icy or otherwise unreasonable, we will postpone until March 16.

Every good and perfect gift is from above, coming down from the Father of the heavenly lights, who does not change like shifting shadows.

James 1:17

Sunday February 13, 2022 Disability Awareness Offering

100% of this offering is retained by the Iowa Annual Conference. The purpose of the Disability Awareness offering is to celebrate the gifts and graces of persons with disabilities and to promote their full inclusion in the community. This offering provides funds for educational opportunities as well as providing grants to local churches in need of assistance in removing architectural and attitudinal barriers to accessibility.



Camp Season Is Coming Soon

It's time to start planning and signing up for camp at one of the beautiful Iowa United Methodist Camps. Catalogs are available at the church or you can go online to check out what's available at www.iaumc.org/camps. Get ready for your adventure of a lifetime.

Have Household Goods or Furniture to Donate?
Contact Lori Leix



Sunday School Missionary Offering

Beginning with the 2nd Sunday in February, our Sunday School offering (2nd to 5th Sundays) will go toward meeting our covenant with Jane Kies. Jane is a missionary at Africa University in Mutare Zimbabwe where she teaches English. Here is an excerpt from the Kies October 2021 newsletter Update from Mutare.



” As we await the rainy season, the landscape dry and faded, the jacarandas which line the streets of many Zimbabwean towns are striking. Colour, too, has returned to our Africa University campus as students have returned to occupy the dormitories and take advantage of the network available for their online classes. Their cheerful greeting and smiles; their sense of expectation and real joy in being here to study; their singing in chapel and lively prayer times in the hills all bring life and sparkle to our community here.

Psalm 37:4 encourages us to ‘delight yourself in the Lord’. These past 17 months of living in the shadow of Covid 19 have for most of us sometimes felt like a dry landscape; colorless and faded. So the reminder to find delight in our relationship with God and others is timely. We are always so thankful for God’s provision and grace in the lives of our young students at this incredible university.

In the words of our students: • Samuel, a student in Rwanda doing online Intensive English: “There are 10 years since God promised me to continue my studies abroad, and I was standing on God’s promises till I received what God gave. Through the praying and waiting faithfully is how I got joy.”

Many students receive scholarships through the Advance Special. Please consider giving/continuing to support this very special ministry. This ‘precious gift’ makes such an enormous difference to the lives of our students, and opens doors for many young people who would otherwise have no chance of attending university. We are so grateful to those who have given over the years.”

We covenant with Jane to support her with \$300 each year. If you are not able to join us in Sunday School, please know you are welcome and encouraged to add your financial support for Jane’s missionary status. Just add a note on your check’s memo line and put your check in the offering at worship.

Corinne, NOW Missions

Newsletter



If you know someone that would like to receive the monthly Newsletter via email, please send their name and email address to the church office to be placed on the email list, at:

Worship@StLukeNewton.com.

A Special Blessing for those with February Birthdays

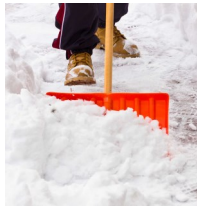
- February 1 Tate Osborn, Lauren Figland
- February 2 Pat Patty
- February 4 Hiap Thongvanh, Conner Marston, Ann Leonard
- February 6 Lisa Pageler
- February 9 Jennifer Rhone
- February 10 Glenda Lewis
- February 11 Kali Draper, Katherine Thomas
- February 13 Andrew Miller
- February 14 Tom Lloyd
- February 20 Russ Leix
- February 22 Karen Dorrell, Emma Carter
- February 24 Tori Boleyn, Hannah Squire
- February 25 Michaela Bleeker
- February 26 Jan Lewis, Evan Grimm
- February 28 Mackenzie Bleeker



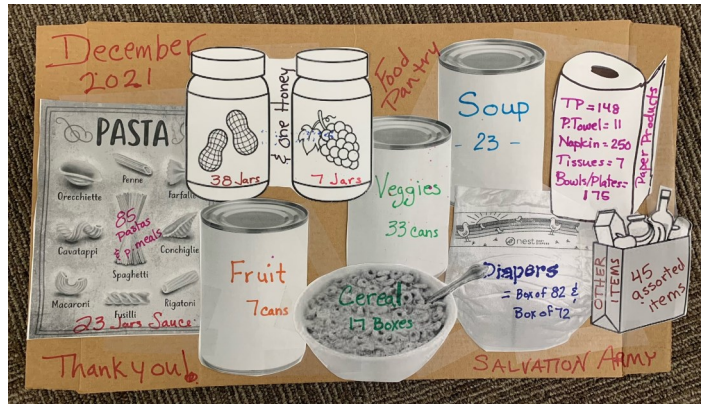
If your birthday is missing or incorrect, please contact the office.

Weather Cancellation Policy

If school is cancelled/dismissed early due to weather, then St. Luke activities are cancelled that day/evening as well. Sunday Worship is rarely cancelled. Check our Facebook page and watch for text messages for announcements. If the weather and road conditions are questionable, use your best judgement and be safe.



December Salvation Army Donations



February Salvation Army Food Pantry Request

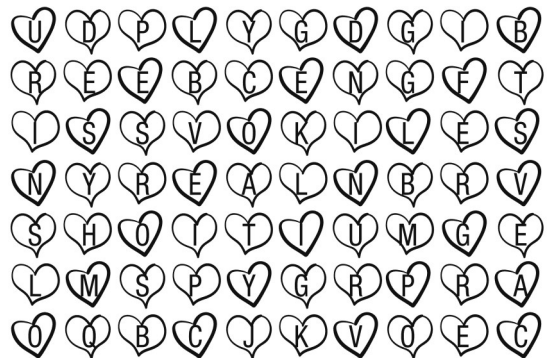
Muffin, Bread, Pancake Mixes and Syrup



The heart of a friend

Big-hearted friendliness comes from generously serving others.

Directions: Start with the first D and move according to the arrows beneath the blanks. Then fill in the letters to complete 1 Peter 4:8-10.



Above all, love each other D , because love

over a multitude of . Offer

to one another without

Each of you should use whatever

you have received to others, as faithful stewards of God's in its various forms.

1 PETER 4:8-10, NIV



This was the moment that Jerry and his "fabulous monochromed piano necktie" began to get worried.